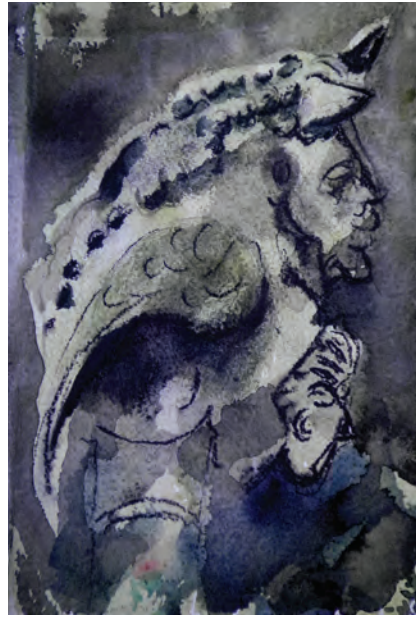


Iona Leishman

in residence at Stirling Castle

Sense of Place



Exhibition & Catalogue

Launch Date December 1st 2011

Stirling Castle

Summary

A Historic Scotland Artist in Residence Pilot
Artist Iona Leishman 2011-2012

Sense of Place Catalogue : Sense of Place is an illustrated (circa 60 image) catalogue of high quality highlighting the artists art work and creative departures during 2011.

Winged Horse
(copyright Iona Leishman)
2011
Oil on Canvas
3.5" x 5"

Main Images x 3
(copyright Iona Leishman)
Dancing for Herself
Rough Wooing
Woman and Her Horse

The catalogue illustrates text supporting a pilot artist residency at Stirling Castle. The 48 page, square perfect bound catalogue will be priced at £6.95 per copy and is published with support from Arts and Business with select contributions from residency partners and Dr Euan McArthur.

Dunblane based Iona Leishman was recommended to undertake this residency towards a period of artistic development and to additionally engage part time with an extensive learning and visitor service programme.

**Sense of Place Exhibition:
Private View December 1st 2011
Stirling Castle**

For further information please contact
Kathleen O'Neill
culturematters@btinternet.com

See Iona Leishman
www.ionaleishman.co.uk

Example Images enclosed x 3 (copyright Iona Leishman)
Woman and Her Horse
Rough Wooing
Dancing for Herself

Extract: A Sense of Place, Dr Euan McArthur

'A residency must also give an artist space to push beyond her boundaries, to make new departures and new beginnings. A good residency allows for risk and, while it requires public engagement, must admit the private, the inwardness of focus and uncertainty of outcome that new artistic ventures entail.

This has certainly happened here. Iona has responded to the castle by imagining it afresh, painting a body of works that grasp its physical forms, a subject that could have absorbed another artist for an entire residency. These are her most public statements, or, put another way, they express her response in the most accessible way. Their dominant visual motive is to find, pictorially, how the castle's forms lock together in space as a series of structures rising one above the other, revealed by sunlight and shadow. Related to these are small, quickly executed studies of details, such as the castle's sculptured figures (its personalities) among which the most important, for her, is probably Mary of Guise. These works have a vitality that comes from immediacy of intuition and handling, and they seem to me to be like portals into another side of her work, crossing points between the ones that explore the castle of reality and the ones that explore spaces of her own imagining'

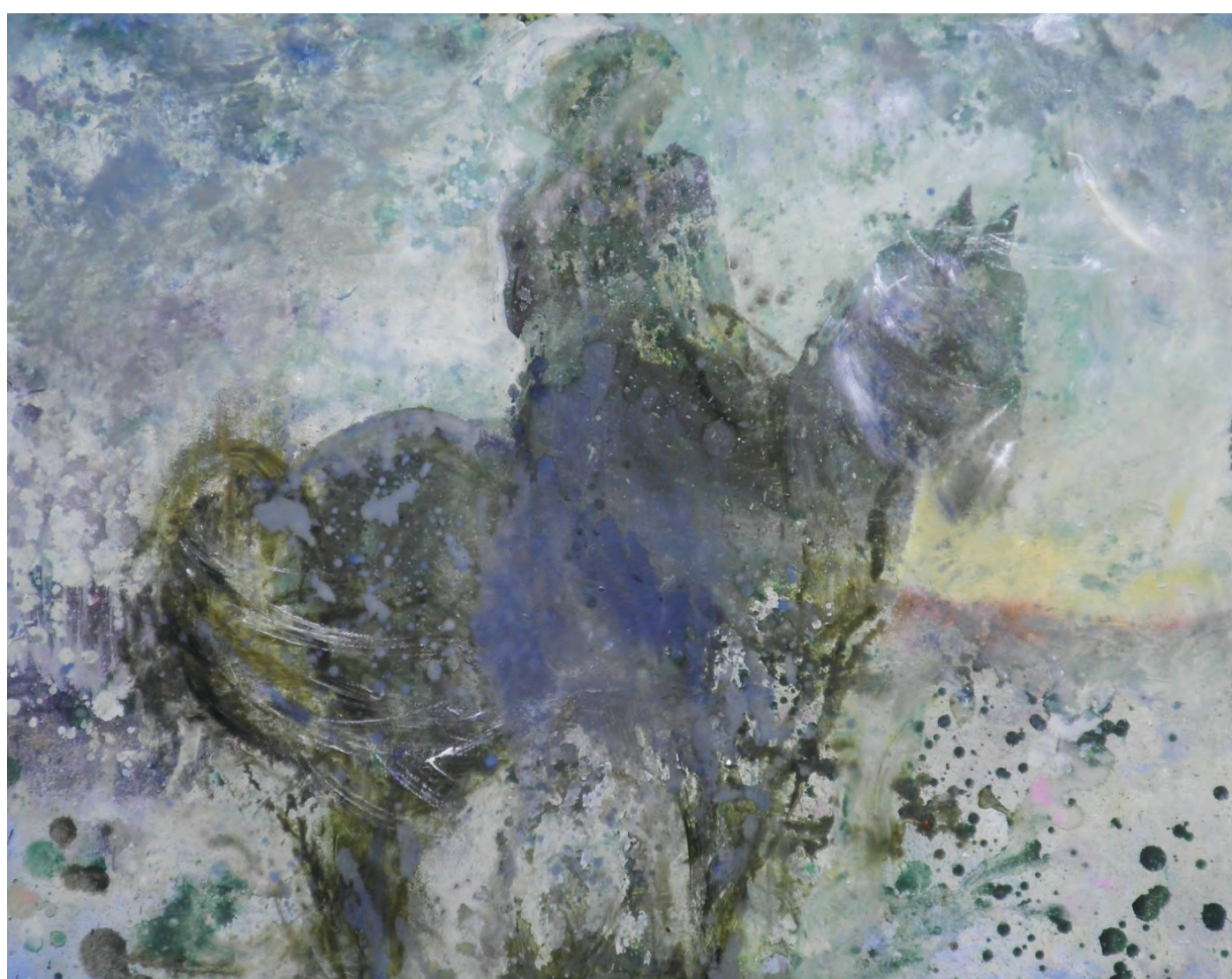
Dancing for Herself



Rough Wooing



Woman and Her Horse



For further information please contact
Kathleen O'Neill
culturematters@btinternet.com